



How to sort out and dispose of garbage

Please take out your garbage by 8:00 am on a collection day.

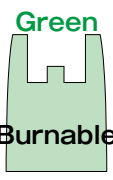


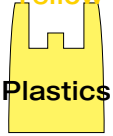
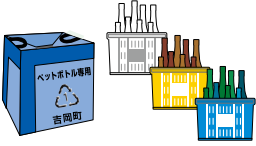
Please follow the garbage disposal rules.

- ◆ Please separate garbage into combustible, non-combustible, and plastic categories and dispose of them in designated bags.
- ◆ Please take out the garbage to your collection point in your community. Do not dispose of your garbage on a day that is not a collection day or in other areas.
- ◆ Garbage not sorted according to the rules will not be collected.

“Only household garbage is collected.” (Business-related garbage from offices, stores, restaurants, etc. is not accepted.)

Household garbage collection schedule

Meiji District (western part) [Ogura·Kaminoda·Uenohara·Shimonoda·Kitashimo·Minamishimo·Jinba]
Komayose District (eastern part)
[Okubo Terashimo·Okubo Terakami·Mizomatsuri·Komayose·Urushibara Nishi·Urushibara Higashi]

Classification	Garbage collection days	Designated bags·boxes
Combustible garbage (burnable garbage)	Meiji District (western part): Every Monday and Thursday ※Year-end : until 12/30 (Mon.) New-year : from 1/6 (Mon.) Komayose District (eastern part): Every Tuesday and Friday ※Year-end : until 12/31 (Tue.) New-year : from 1/7 (Tue.)	Green  Burnable
Non-combustible garbage (non-burnable garbage)	Every month 1st and 3rd Wednesdays ※Year-end : until 12/18 (Wed.) New-year : from 1/15 (Wed.) ※Collection is not scheduled on the 5th Wednesday. ※Only in January, collection is scheduled on the 3rd and 5th Wednesdays.	Transparent  Non-burnable
Hazardous garbage		Red container 
Plastic		Yellow  Plastics
Recyclables (Recyclable garbage)	Every month 2nd and 4th Wednesdays ※Year-end : until 12/25 (Wed.) New-year : from 1/8 (Wed.)	
Large-sized garbage	Local neighborhood associations twice annually (dates and places are listed on the right)	

※Collection is not scheduled on Saturdays and Sundays.

Combustible garbage (burnable garbage) twice a week

Paper

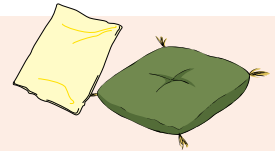
●Waste paper

※Preferably, old paper should be disposed of as recyclable garbage.



Fiber materials

- Clothing
- Cushions
- Cloth scraps, etc.



Kitchen garbage (raw garbage)

●Food scraps, etc.

※Please fully drain.



Rubber · Leather products

- Shoes
- Belts
- Bags, etc.



Others

●Incineration ash from heaters

Moisten and pack ash in a plastic bag, and put it in a designated bag.

●Disposable lighters (made of plastic)

Please spray all the leftover product out in a well-ventilated, fire-free outdoor area before disposing of them.



●Fallen leaves

●Small number of twigs

(Cut into pieces shorter than 50 cm in length and less than 10cm in thickness, and dispose of in designated bags. If there are a lot, split up and dispose on several collection days)

We cannot accept if a designated bag is only wrapped around twigs.



●Disposable body warmers · Ice packs

●Small amount of oil

Please either soak it into paper or cloth, or solidify it.

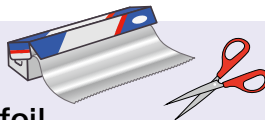


Non-combustible garbage (non-burnable garbage) twice a month

Metals

- Knives
- Scissors
- Umbrellas
- Aluminum foil
- Cans, etc.

※Please wrap ones with sharp blades with newspaper.



Glass · Ceramics

- Bulbs
- Glass
- Cups
- Potteries
- Flower pots
- Fluorescent lamps, etc.

※Please wrap bulbs and glass with something like newspaper, or put them in the packing materials they came in when purchased.



Dry batteries

- Alkaline batteries
- Zinc-carbon batteries

※As for coin batteries, please use collection service at storefront.
 ※Rechargeable small batteries (lithium-ion batteries · nickel-metal hydride batteries nicad batteries) and mercury batteries cannot be collected. Regarding rechargeable small batteries, please refer to the below or the page 9.



Household appliances

- Clocks
- Game devices
- Rice cookers
- Electric kettles
- Digital cameras
- Printers, etc.

※Please have ink cartridges removed from printers or multi-function machines.
 ※PCs are not acceptable for collection. Please ask the manufacturer for collection, or take them to small appliance collection events of your town or get them collected by the delivery service. (The details on page 9)
 Regarding manufacturers' repair service contact information, please check with PC 3R Promotion center.



<https://www.pc3r.jp> TEL : 03-5282-7685

⚠ Mobile batteries, heated tobacco devices and etc. with built-in rechargeable small batteries can cause garbage truck fire. Please use the collection service or boxes of shops and retail stores.

Hazardous garbage twice monthly

spray cans · gas canisters · fluorescent lights

- Please use up spray cans or gas canisters, and do not puncture them, and place them in the red container.
- The red container is exclusively for spray can, gas canisters and fluorescent lights.



No need to puncture.



Punctured ones can also be collected. Please do not dispose of them in a bag, but place them in the red container.

Plastics twice monthly

Please dispose of them in a yellow designated bag.

- Please give them a quick rinse with water or wipe lightly with paper. (Ones that are too dirty should be collected as combustible garbage)
- Ones that measures over 50 cm should be cut off. (hoses, raincoats, etc.)
- Cutting boards, acrylic plates and others with thickness over 5mm cannot be collected. (Ones with thickness over 5mm that cannot be bent)
- ※ for a risk of damaging bag breaking machines or crushers
- Do not double-bag plastics.
- ※Please do not double-bag with smaller plastic bags inside, because it will be hard to break in recycling.



Plastic containers and packaging.



Ones with the Plastic mark

● Egg packages



● food trays



● snack bags



● bottles



● styrofoam



● bento boxes



● plastic bottle caps · labels, etc.



※Please dispose of plastic bottles separately.

Partially plastic items

100% plastic items

● buckets



● hangers



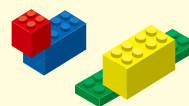
● CDs · DVDs



● plastic folders



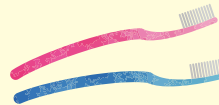
● toys



● plastic wraps



● toothbrushes



● food storage containers, etc.

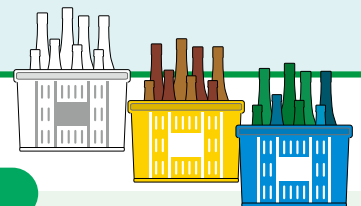


※Please have metal parts such as screws removed when disposing. (except for ones that run on electricity or batteries)

⚠ Please do not mix the followings.

- Ones that can cause fire when collecting (lighters, electric devices with lithium-ion batteries)
- Ones with risk of injury (cutlery, etc.)
- Ones with risk of disease infection (medical devices, etc.)

Recyclables (recyclable garbage) twice a month



Plastic bottles

Containers of juice, liquors, soy sauce, etc. with identification mark 1.

※Please remove labels and caps and rinse inside, then place in the designated container.

※Please dispose of dirty ones as burnable garbage.



Limited to ones with No.1 mark.



PET



Glass bottles

Glass bottles of energy drinks, food, seasoning, beverages, etc.

※Remove tops, rinse inside, and put in the designated container differentiated by colors.

Colorless transparent glass bottles

White container

Brown glass bottles

Yellow container

Other glass bottles

Blue container

Glass bottles that are broken or stained with something like oil should be disposed of as non-combustible garbage. Please dispose of glass bowls (cups, plates, etc.) as non-combustible garbage.

Recyclable garbage

Please cooperate with group collection in your community.

Neighborhood associations, children's associations and others in the community collect recyclable garbage. Collected garbage is recycled and utilized as funds for the associations' activities

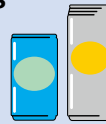
Old paper



- Newspaper
- Magazines
- Fliers
- Miscellaneous recyclable paper
- Cardboards
- Milk cartons, etc.

Metals

- Aluminum and ironware
- Aluminum cans
- Steel cans, etc.



Bottles

- Beer bottles
- Issho-bin (1.8 liter bottle) (brown, green), etc.



※Each collection authority collects different items at a different place on a different date. Please contact the local collection authority (neighborhood association, children's association, etc.) for more detailed information.
 ※Town offers rewards to collection authorities to promote recycling.

Cloth

- Clothing
- Towels
- Sheets
- Jeans, etc.



Large-sized garbage local neighborhood associations twice annually

Please paste a large-sized garbage sticker on it.

• Please separate garbage into combustible (flammable) and non-combustible (non-flammable) categories in disposing.
 (example) Please remove metal fittings and glass parts from drawers, kotatsu, etc. and metals parts from sofas and zaisu (floor chairs).

※Please break down bulky garbage such as drawers and bookshelves into smallest possible parts when disposing

- As a general rule, please take out the garbage on collection days of your community
- Please do not take out the garbage on the day before a collection date or before or after garbage collection hours. Please take out the garbage within garbage collection hours and follow the instructions of the person on duty.
 (For bulky garbage collection, disposal contractors, local neighborhood association members and environmental beautification promotion committee members will be present.)
- To dispose of heaters, please get rid of leftover kerosene from the tank.
- Put a bulky garbage sticker on each bulky garbage.



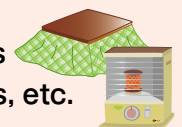
Furniture

- desks
- chairs
- dressers
- drawers
- tables
- cupboards, bookshelves
- carpets
- washstands
- bed mattresses (please have the bedspring removed)
- bedframes
- futon, etc.



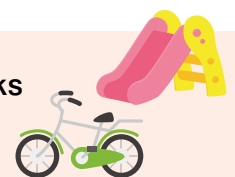
Big household appliances

- Electric kotatsu heaters
- Heaters
- Fan heaters
- Microwaves, etc.



Others

- Bicycles
- skies (please have the bindings removed)
- Bathroom sinks
- Sinks
- Cooking tables
- Tin sheets
- Children's play equipment (slides, swings, etc.)
- Gas water heaters, etc.



We do not collect tatami mats. Please bring them directly to the clean center. (There is a number restriction.) Otherwise, ask tatami shops, etc.

⚠ Regarding items that are hard to break down yourself, please contact a general waste disposal business contractor authorized by the town.
 (Contractors have different rates for disposal, so make sure to check with them.)
 Please do not bring in 4 home appliance items and ones that cannot be collected by the town. (page 10)

Stores at which you can purchase Yoshioka town's designated bags and stickers for large-sized garbage.

(as of January 6, 2024)

Meiji District (western part)	Komayose District (eastern part)
(Ogura) Hoshoku (Oguraya) (Kaminoda) Seven Eleven Yoshioka Kaminoda Marue Drug Yoshioka Nodajuku JA Farmers Nodajuku (Uenohara) Tomizawa Sekiyu, Lawson Yoshioka Kaminoda (Shimonoda) Shingai Store, Shibasaki Shoten, Kurita Shoten Family Mart Yoshioka Shimonoda Yamato Tofu-ten, Kusuri-no-Aoki Yoshioka (Kitashimo) Yamakiya Pharmacy, Matsuda Shoten Komeri Hard & Green Yoshioka (Minamishimo) Osawa Yohinten, Tokozume Shoten Osawa Shoten Seven Eleven Yoshioka Minamishimo (Jinba) Hachisu Shoten, Kashima Shoten Drug Seims Yoshioka	(Okubo Terashimo) Seven Eleven Jomo Ohashitori Fressay Yoshioka, Marue drug Yoshioka Seven Eleven Yoshioka By-pass Cainz Maebashi Yoshioka, Don Quijote Yoshioka Tsuruya Yoshioka, Joyhon Yoshioka Drug Cosmos Shop Yoshioka Okubo (Okubo Terakami) Farmdo Yoshioka, Cawachi Yoshioka Tanaka Yohinten Lawson Yoshioka Komayose Smart Interchange (Mizomatsuri) Seven Eleven Yoshioka Okubo Lawson Yoshioka Komayose Interchange Kusuri-no-Aoki Yoshioka Okubo (Komayose) Haruyama Shoten, Kuran Pain (Urushibara Nishi) Yamamoto, Michi-no-Eki Yoshioka Onsen Shipping Union, Eiwa Denki (Urushibara Higashi) Kokuya Shibasaki Saketen Lawson Yoshioka Urushibara

(Shinto-village) Fressay Shinto Arai
 (Shibukawa-city) Cainz Shibukawa Arima, Hirohashi Shoten, Beisia Shibukawa, Cawachi Shibukawa Minami
 (Maebashi-city) Belc Maebashi Soja (Takasaki-city) Aeon Takasaki

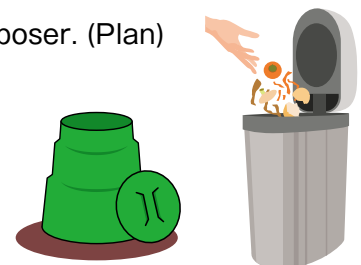
※Stored listed above may not have the products you want to purchase. Please check with the stores.

Subsidy for purchasing a food waste disposer

We provide a partial subsidy for the purchase cost of a food waste disposer. (Plan)

Subsidy amount

- Food waste composting container (composter)
At half the purchase cost, for a maximum of 3,000 yen
- Composter (electric)
At half the purchase cost, for a maximum of 20,000 yen



Regarding application procedures · required documents, please refer to the town's website or check with the resident division.

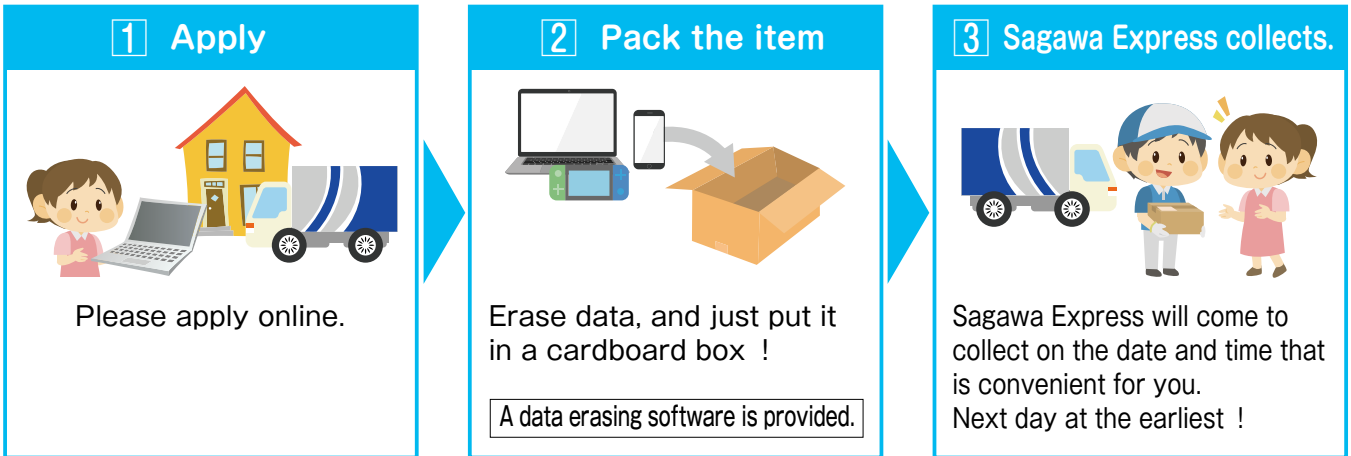
※We will stop accepting applications once it reaches the budget amount for the year.



Here is information about garbage and recycling.

Collection of used small appliances by delivery service.

When you dispose of a PC or a small appliance, you can apply for collection at our affiliated contractor, Renet Japan Recycle. Please apply online or by fax. It will be collected by the delivery service at the date and time of your request.



If your collection request includes a PC, one box will be collected free of collection charge.

※There is a charge for CRT monitors (cathode-ray tube) .

Computer peripherals including printers and scanners, and other small appliances can also be accepted. Please refer to the town's website or the website of Renet Japan Recycle for more information including how to pack or acceptable items for collection.

Yoshioka Town Renet Japan Recycle

Collection of used ink cartridges

Used ink cartridges by any manufacturers, both genuine and recycled ones are accepted for collection. Maintenance boxes are acceptable for collection, but toner cartridges aren't.



- Places for collection**
- ①Yoshioka Town Hall, Main building 1F, at the information counter of Resident Division
 - ②Yoshioka Town Culture Center, Entrance Hall
 - ③Yoshioka Town Community Center, Entrance Hall

The collection boxes are placed at elementary · junior high schools in the town, families with students can use them.

Rechargeable small batteries collection

You can bring nicad batteries, nickel-metal hydride batteries, lithium-ion batteries, and portable chargers to the residence division.

※Items without the mark shown on the right, coin batteries, and ones that are deformed or damaged cannot be collected.

※Please have them removed from electronic devices when you bring them in.



Nicad batteries



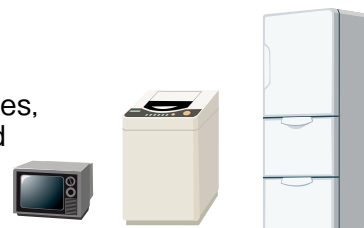
Nickel-metal
hydride batteries



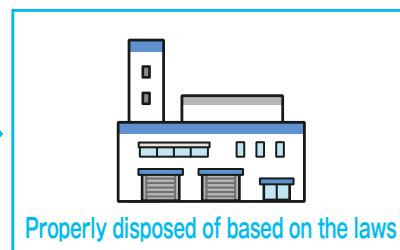
Lithium-ion
batteries

4 household appliances

As provided by the Act on Recycling of Specified Home Appliances, air conditioners · television sets, refrigerators, freezers, washing machines, and drying machines that you no longer use at home cannot be disposed of as large-sized or non-combustible garbage or brought in to the clean center. Please dispose of them by one of the following ways.



- ① Bring it to a store. (at the store it was purchased or when you purchase a replacement)
- ② Have a contractor affiliated to the town collect it from your home.



- ③ Ask a licensed general waste disposal business to collect it.
- ④ Bring it to the designated place together with a home appliance recycling ticket.

For ①~③, recycling fee + delivery fee
Recycling fee will be charged for ④.

Please refer to the town's HP.

Yoshioka Town Household appliance recycling

search

Garbage that cannot be collected

- Gas canisters ● Tires ● Agricultural chemicals
- Machine oil ● Paint ● Agricultural plastics
- Agricultural implements ● Construction waste materials
- Debris including concrete block ● Batteries
- Bikes · Fire extinguishers ● Household medical waste
- Large number of logged trees, etc.



It cannot be disposed of at the clean center.
Please ask the distributor to handle them.

- ※ Regarding agricultural plastics and chemicals, please consult with retail stores including agricultural cooperatives.
- ※ Regarding waste tires and batteries, please take them to collection events (for a fee) of your town. (Details will be informed by Kairanban or in Koho.)
- ※ As for household medical waste, please ask the medical institution where you get examined or the pharmacy you get your prescription filled at.

Automobiles · Automobile parts

It is required by Act on Recycling, etc. of End-of-Life Vehicles that automobiles no longer in use have to be handed over to a business trader. There are certain rules within this Act regarding removing parts from automobiles that are no longer in use.

Parts of automobiles and self-driving automobiles cannot be disposed of at the clean center.

For more information, **Japan Automobile Recycling Promotion Center**

TEL : 050-3786-7755 URL : <http://www.jarc.or.jp/>

Or you can also check with a business trader approved by the prefectural governor.



Business-related garbage

Garbage from business activities (stores · companies · offices · factories · construction sites · government offices · schools · hospitals · nursery schools, etc.) is not accepted at the collection spot for household garbage. Please bring garbage from business activities directly to the clean center. Alternatively, you can sign a contract for disposal with a licensed general waste disposal business or a licensed industrial waste disposal business. (for a fee)

Regarding garbage that is not properly disposed of according to the rules

Neighborhood association members, people in the area, and managers of buildings manage and clean the garbage stations on a daily basis for the residents.

A warning sticker will be attached to your garbage.

Town · local neighborhood association members and disposal contractors may attach warning stickers to garbage not disposed properly by the rules.

- Garbage that is not in a designated bag
- Garbage disposed on days other than collection days.
- Mixture of combustible and non-combustible garbage
- Items that are not acceptable at garbage stations
(Items covered by the Act on Recycling of Specified Home Appliances, PCs, automobile parts, fire extinguishers, garbage from business activities)
- Follow the garbage disposal rules described in How to Sort · Dispose of Garbage, or members from the town and the neighborhood associations, disposal contractors and others may attach a warning sticker to your garbage.

You must follow the rules, or your garbage will be left at the garbage stations, which will be disturbing to other residents. If your garbage has a sticker, please take it home and take appropriate action as written on the sticker.

収集できません お持ち帰りください！



- 指定袋に入れて出してください。
- 地区ごとに決められた収集日を守って出してください。
- 可燃ごみと不燃ごみが混在しています。
分別してそれぞれの収集日に出してください。
- ペットボトルはキャップとラベルを外して、中をすすいでください。
- スプレー缶・カセットボンベは中身を使い切ってから、穴を開けずに赤コンテナに入れて出してください。
- 町では収集しないごみです。
 - ・家電リサイクル法対象品（テレビ、冷蔵庫、冷凍庫、エアコン、洗濯機、衣類乾燥機）
 - ・パソコン、パソコンディスプレイ、ノートパソコン
 - ・事業系ごみ（処理施設に直接持込むか収集運搬許可業者へ依頼してください）
 - ・町では処理できないもの（例：タイヤ、自動車部品、バッテリー、消火器、搬入基準を満たさない伐採木など）
- その他（
※該当する項目に油性ペン等でチェック印を入れ、右上に日付を記入してください。

吉岡町・吉岡町環境美化推進協議会
吉岡町 住民課 TEL:0279-26-2245

Direct bring-in

Regarding direct bring-in to the clean center, please check the following.

Fee ¥220 yen / 10 kg (including tax)

- Please bring an ID with you such as your driver's license.
- Please separate garbage into combustible, non-combustible, plastic and large-sized before you bring them in.
- Besides items listed as not acceptable for collection (page 9), containers with thick metal, hard iron like wire, gas, oil, chemicals will not be accepted, even if they are within the following measurements.

(Restriction of acceptance for large-sized garbage)

◎Combustible large-sized garbage

Width: below 1.5m

Depth: below 0.6m

Height: below 3.0m

※Box-type furniture like chests of drawers may have large metal fittings, please remove them.

◎Non-combustible large-sized garbage

Width: below 1.2m

Depth: below 1.2m

Height: below 2.0m

※There are restrictions on amount for tatami mats, pruned branches and wood. Please contact the clean center directly for more information.

※Regarding pruned branches and wood, we work in cooperation with private business contractors. Please check with the resident division of Yoshioka Town Office directly for more information.

Inquiry contact for direct bring-in

Shibukawa-chiku Koiki-ken Seiso Centa (Shibukawa District Wide Area Clean Center)

Address: 3153-2 Miyukida, Shibukawa city Tel:0279-23-0460

◎Time for bring-in (except for Saturdays, Sundays, and year-end and new-year holidays)

From 8:30 am to 4:30 pm (except for between noon and 1 pm)

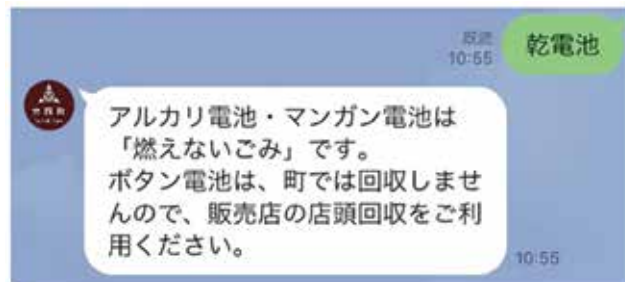
※Please ensure you bring in ahead of time so that you can leave by noon or by 4:30 in the afternoon.

Search garbage categories

You can find out about garbage categories on the town's official LINE account. Scan the 2D barcode, or search for Yoshioka Town on the LINE home screen and add to your friend. Please use it by all means.

How to use

Please say names of items to it to find out how to dispose of.



Yoshioka Town Resident Division TEL: 0279-54-3111

Yoshioka Town · Yoshioka Town Environment Beautification Promotion Committee

Yoshioka Town Federation of neighbourhood associations